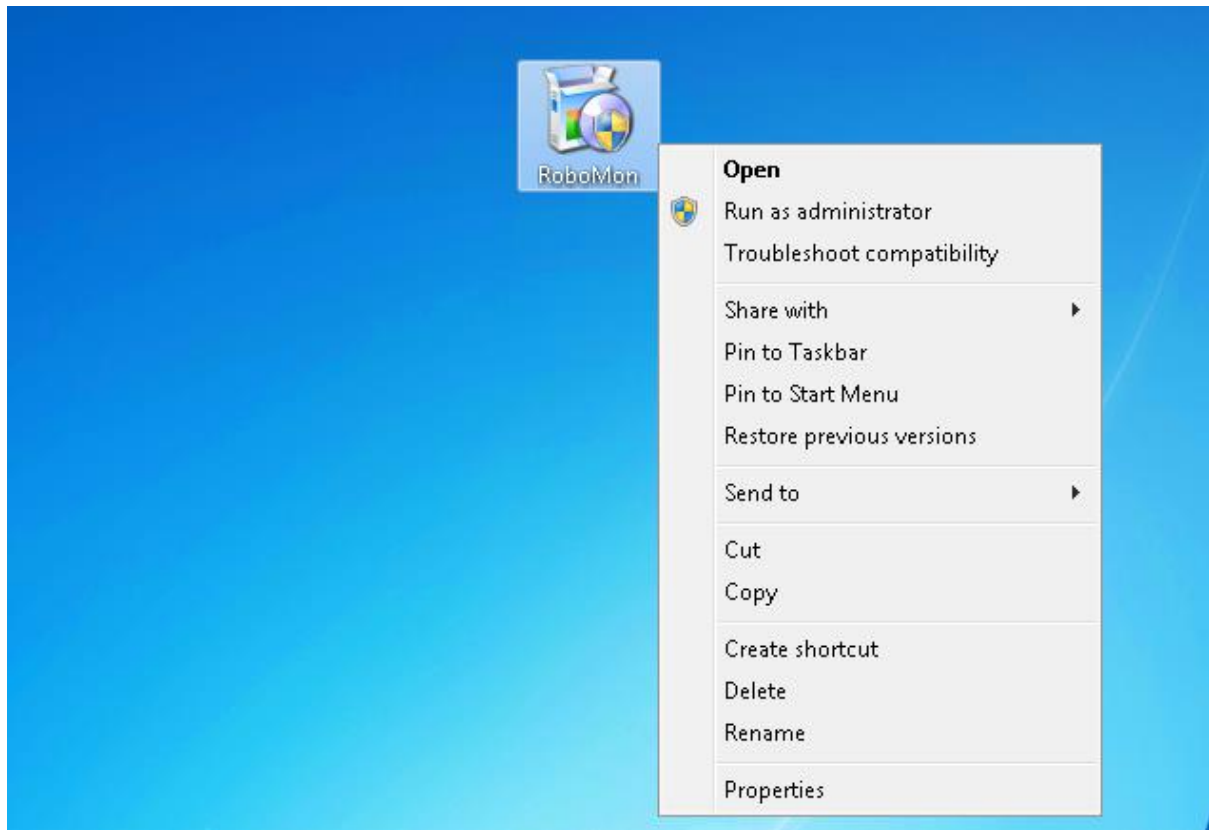


## RoboMon Installation Steps

### Step 1:

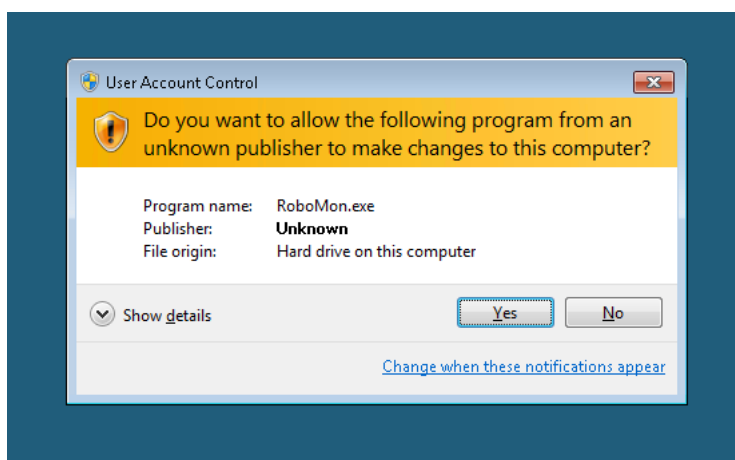
'RoboMon' exe needs Administrator rights for installation.

Hence, Do 'Run as Administrator'



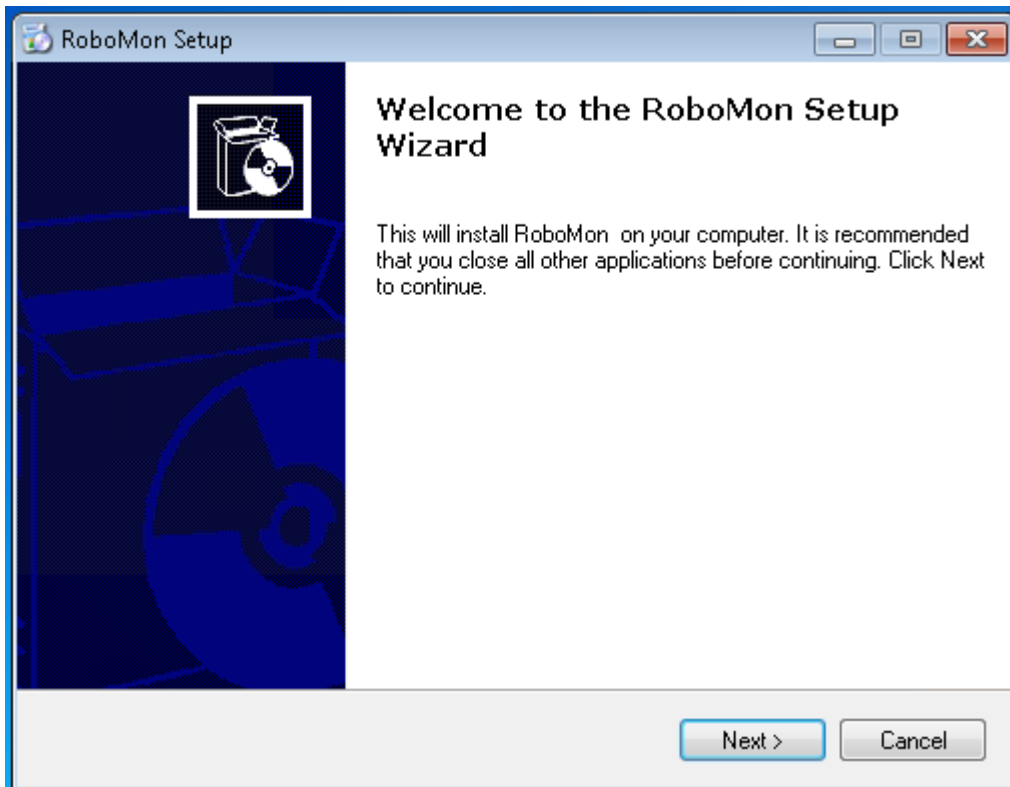
### Step 2:

A Dialog window will open, Please select 'Yes'.



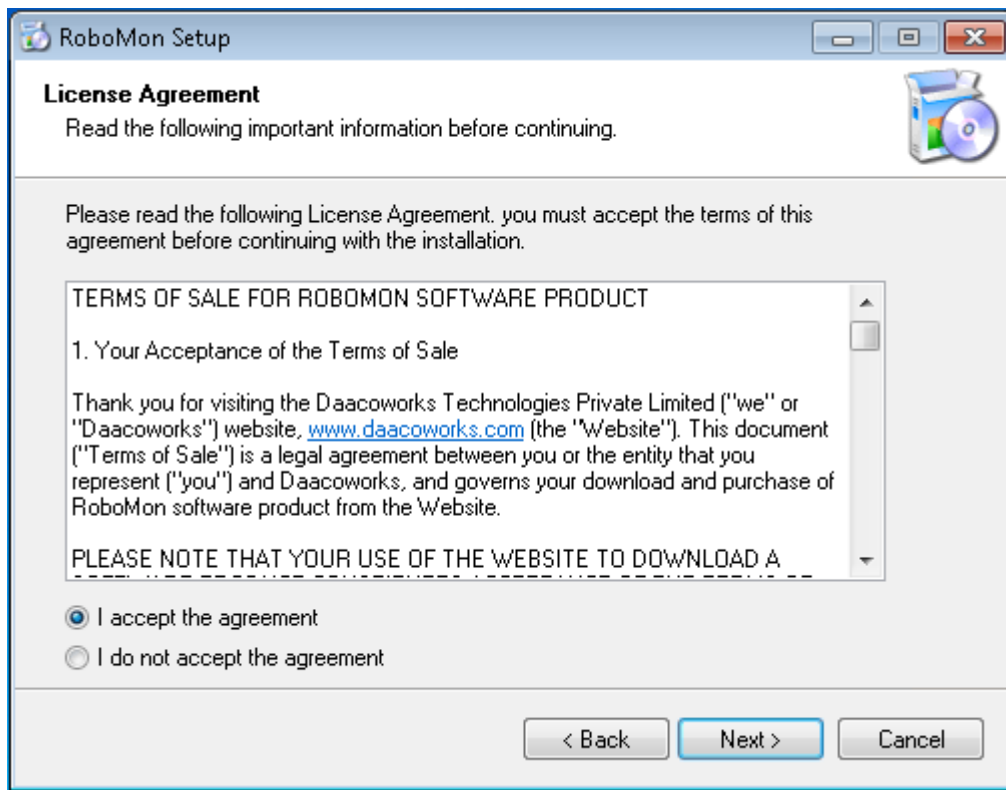
**Step 3:**

Welcome page in installation wizard will appear. Please select 'Next' to go to next step.



**Step 4:**

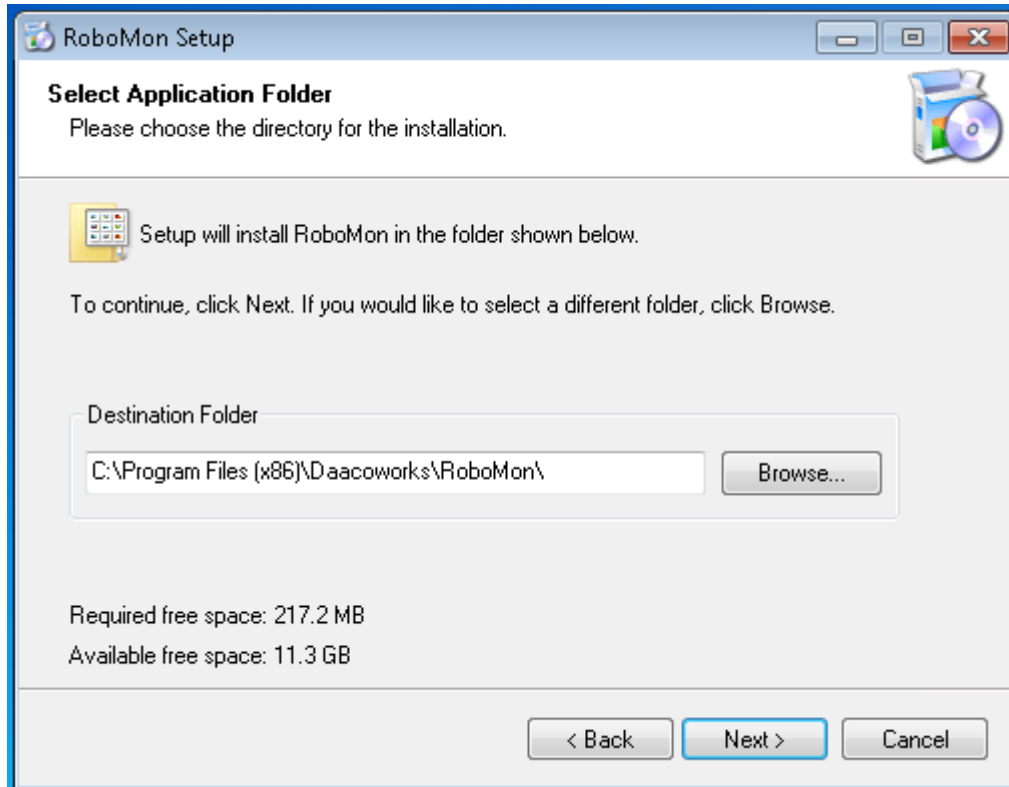
'License Agreement' page will appear in the wizard. Please select 'I accept the agreement' and click 'Next' to proceed further.



### Step 5:

Installation wizard will show a location for installation. If you want to change the location, Please do click 'Browse' button.

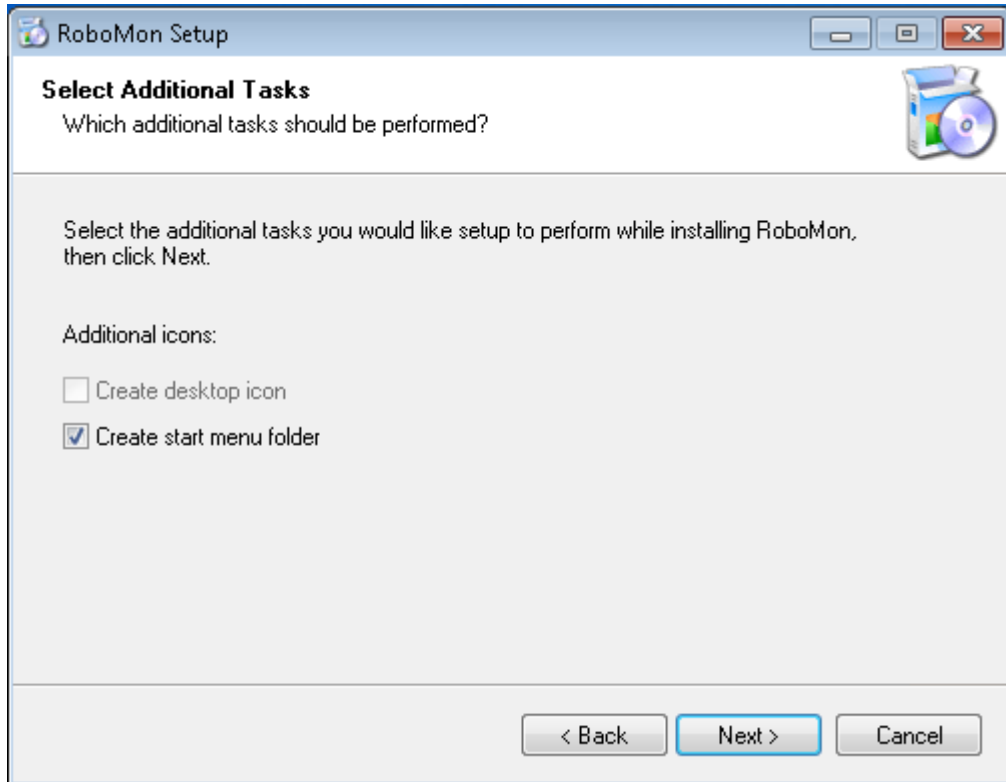
Please select 'Next' to proceed to next step



**Step 6:**

'Select Additional Tasks' wizard will appear. Please do select 'Create start menu folder' if you prefer that. If its selected, 'RoboMon' will appear in 'Start Menu'

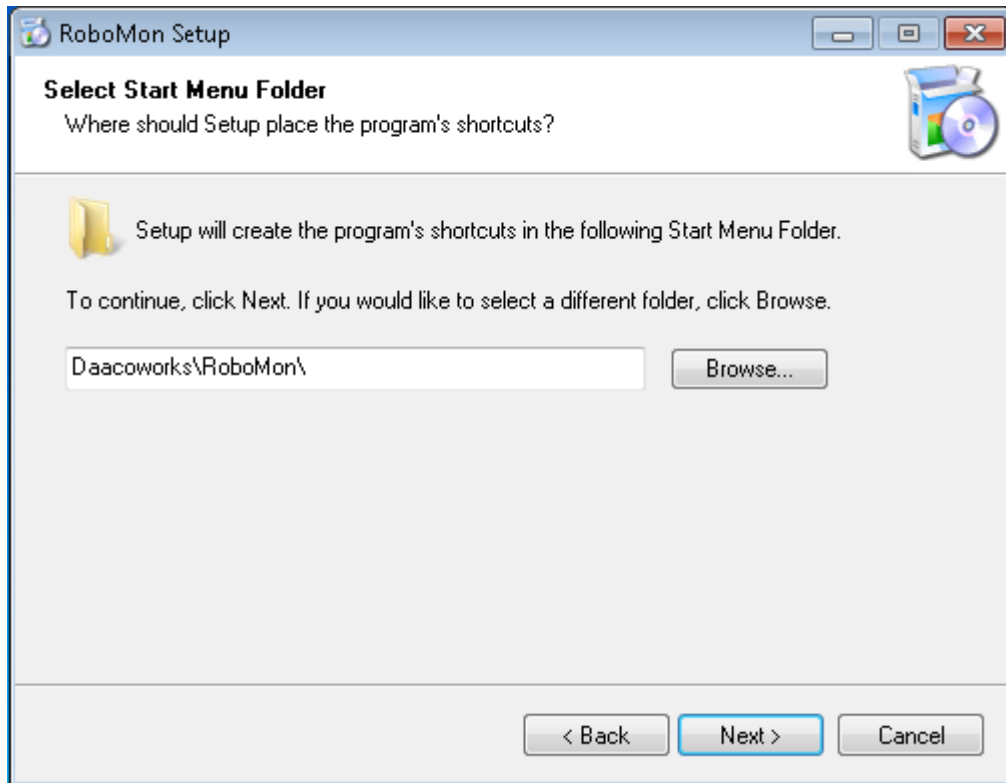
Please click 'Next' to proceed further.



**Step 7:**

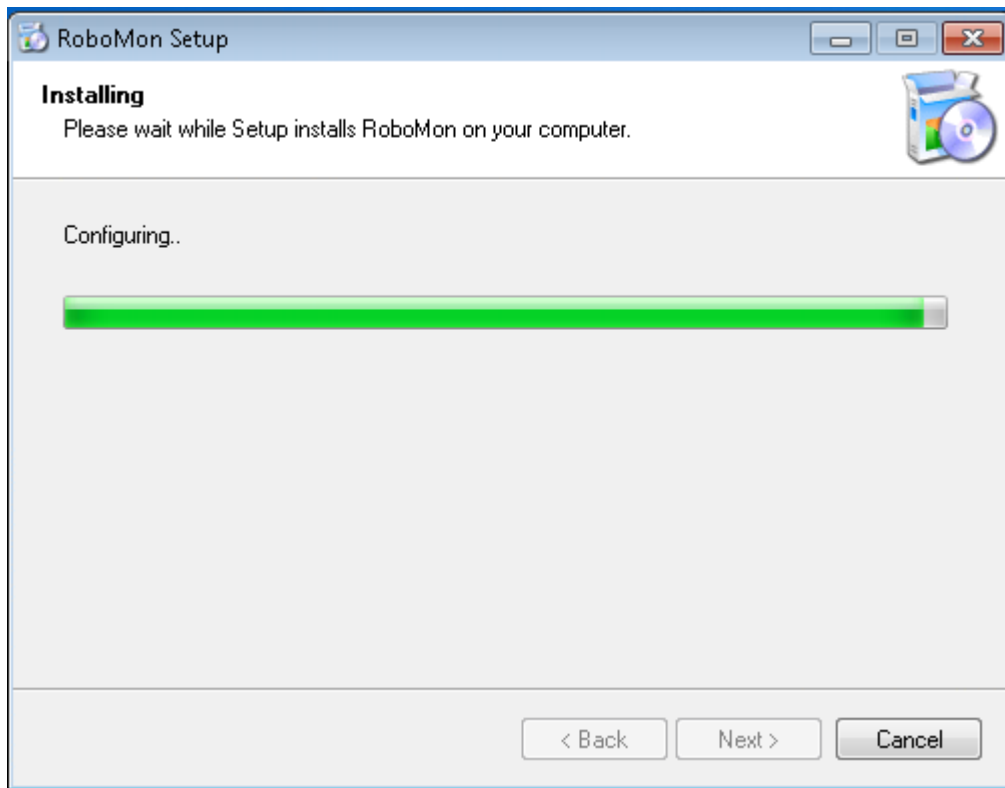
If 'Create start menu folder' is selected in 'Step 6', then 'Select Start Menu Folder' wizard will appear with default location. If you want to change the location, please select 'Browse' button.

Please click 'Next' to proceed further.



**Step 8:**

Installation is in progress. Please wait until 'Next' button is enabled. It might take a few minutes.

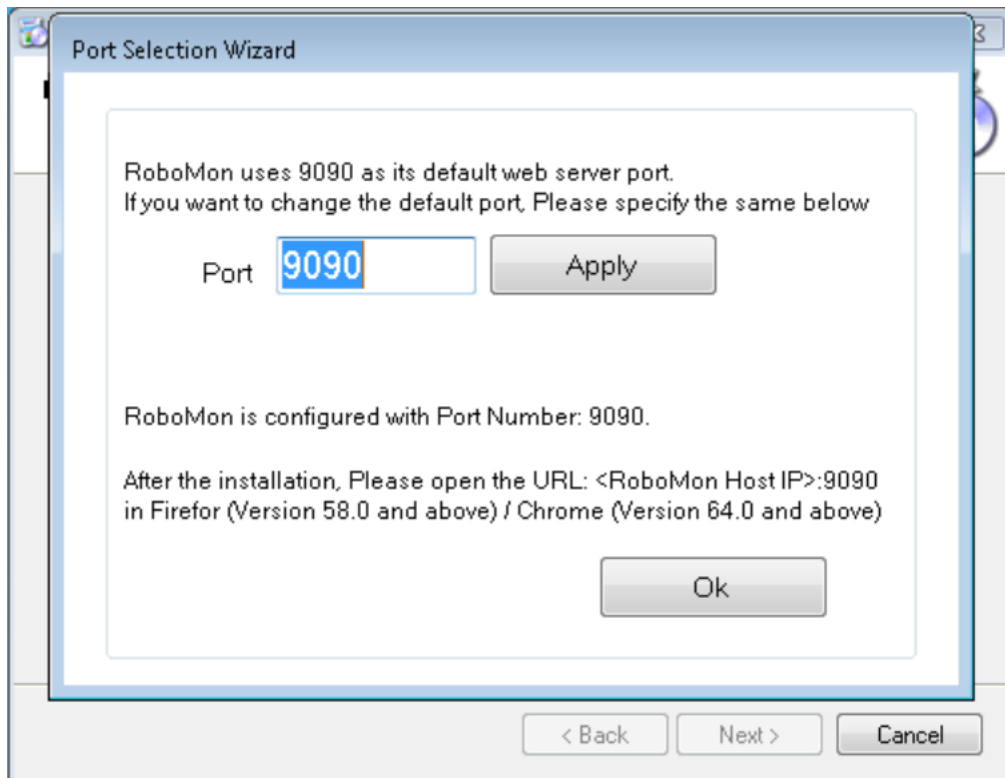


### Step 9:

Installation wizard will show port configuration window with default port. If you want to change the port, Please input the port number in 'Port' text field.

**Note: You shall create inbound and outbound rules in windows firewall settings for this port.**

**This is important as RoboMon URL (<Host IP>:Port) will be accessible only after this firewall settings.**



### Case 1: Default Port

Click 'Ok' and Installation will start RoboMon services.



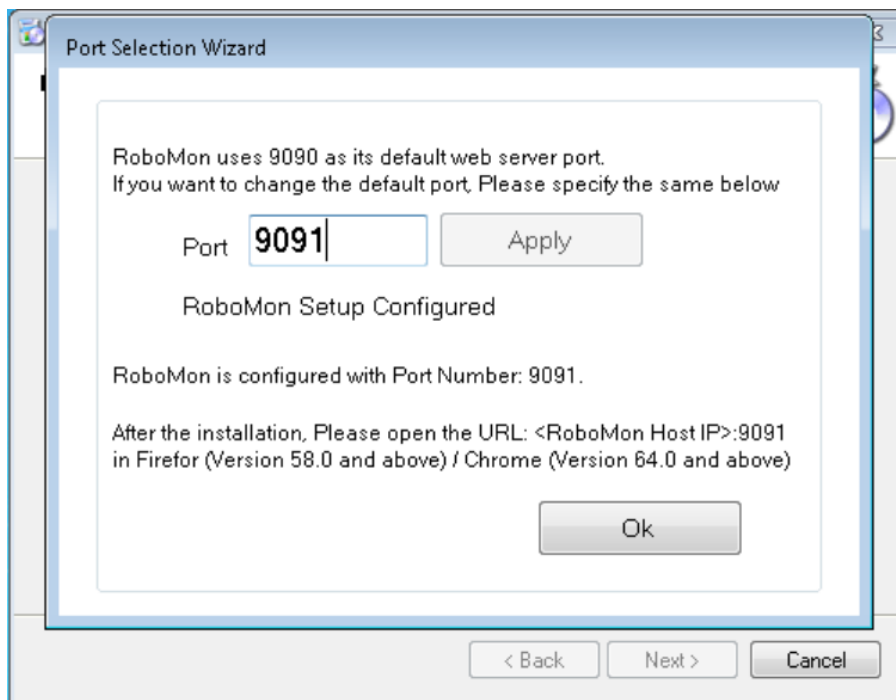
## Case 2: Changing RoboMon Port

Please do input port in the port field, then Click 'Apply' Button.

'RoboMon Setup Configured' Message will appear in the Wizard after configuring the port.

Then Click 'OK'.

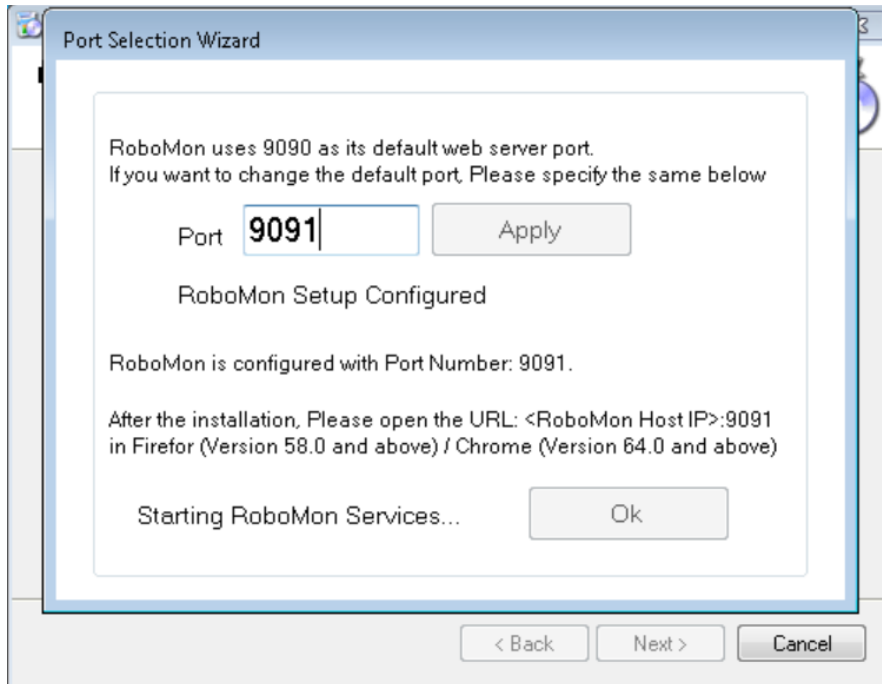
Installation will start RoboMon Services.



**Step 10:**

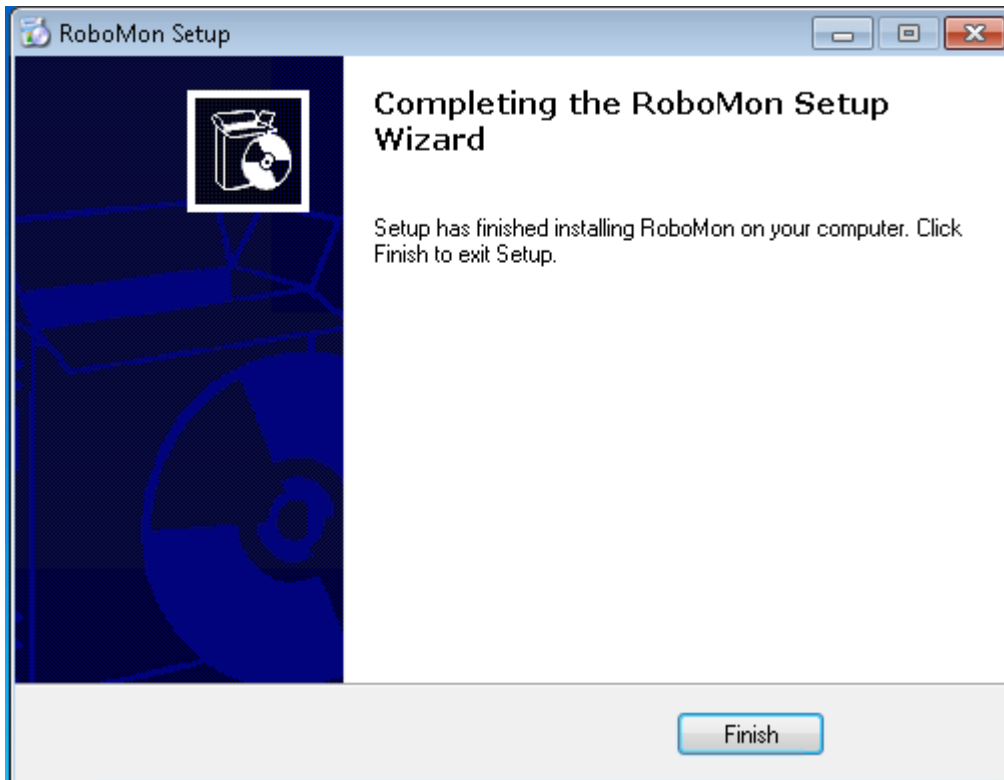
You are at final stage of installation.

Please note that it might take a few minutes to complete the setup.



**Step 11:**

RoboMon Installation is completed successfully.



**Note:** Recommended Browsers are Firefox and Chrome. Please open one of these browsers and try <ip address of RoboMon Installed system>:<port given during the installation>  
RoboMon Login page will be loaded.

**Default User name / Password:** admin / admin